

## CASE STUDY

### Feasibility Study for Sports Pavilion

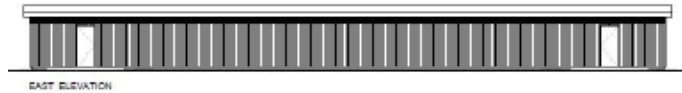
**Property:**

School Sports Pavilion



**Location:**

Tunbridge Wells, Kent.



**Client:**

Prestigious Kent Grammar School

**Service Provided:**

Feasibility Study



**Summary:**

Alexander Harris were appointed by a leading Kent Grammar School to undertake a feasibility study to assess the viability of constructing a new sports pavilion with changing facilities adjacent to an existing sports fields. The school had outgrown their existing facilities, which no longer met their needs.

Alexander Harris met with the school and assisted in developing a brief before going on to provide a full feasibility study covering a multitude of issues including project cost, risk management, procurement strategy and programme.

The client is currently deliberating the project. Alexander Harris are looking to be appointed to obtain planning permission and act as lead consultant providing design, Contract Administration and Project Management services for the construction of the new facility.

For more information contact:  
01622 232 595  
[enquiries@ahpbc.co.uk](mailto:enquiries@ahpbc.co.uk)

