

CASE STUDY

Feasibility Study for Sports Pavilion

Property:

School sports pavilion



Location:

Tunbridge Wells, Kent.

Client:

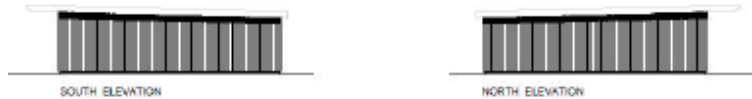
Prestigious Kent Grammar School



Service Provided:

Feasibility study

Project services



Summary:

AH PBC was appointed by a leading Kent Grammar School to undertake a feasibility study to assess the viability of constructing a new sports pavilion with changing facilities adjacent to the existing sports fields on the basis the school had outgrown their existing facilities and no longer met their needs.

AH PBC met with the school and assisted in developing a brief before going on to provide a full feasibility study covering a multitude of issues including project cost, risk management, procurement strategy and programme.

The client is currently deliberating the project, AH PBC are looking to be appointed to obtain planning permission and act as lead consultant providing design, contract administration and project management services for the construction of the new facilities.

For more information contact:
01622 232 595
enquiries@ahpbc.co.uk

